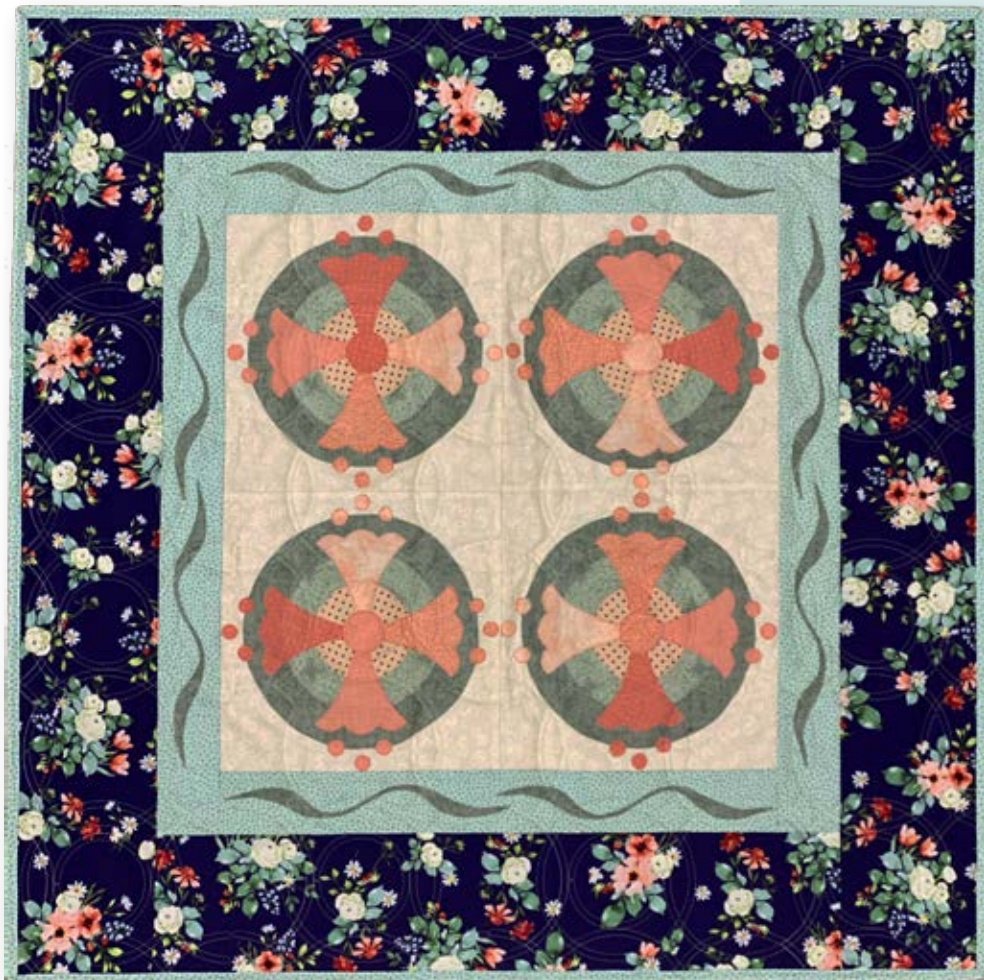


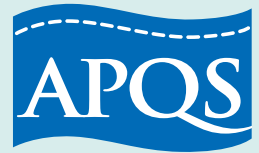
Tulip Wheel

By Heidi Kaisand | Hen & Chicks Studio | henandchicksstudio.com



Tulip Wheel

© Heidi Kaisand | Hen & Chicks Studio | henandchicksstudio.com



35 x 35" Finished Quilt | 10 x 10" Finished Block

Fabric Yardage (based on 42"-wide fabric):

- $\frac{1}{3}$ yard of cream print for background
- $\frac{1}{3}$ yard of sage green print for large circle and border appliqués
- $\frac{1}{4}$ yard of light green print for medium circle appliqués
- $\frac{1}{8}$ yard of cream-and-blue dot for small circle appliqués
- 4— $\frac{1}{8}$ -yard pieces of assorted peach and coral prints for flower, extra-small circle, and berry appliqués
- $\frac{5}{8}$ yard of blue-green print for inner border and binding
- $\frac{3}{4}$ yard of blue floral for outer border
- 1 $\frac{1}{4}$ yards of backing fabric
- 42 x 42" of batting
- Lightweight double-sided fusible web

Sew a sign of spring with appliquéd tulip blocks. Fusible web makes the process easy!

Cutting Instructions

To make the best use of your fabrics, cut pieces in the following order. To use fusible web to prepare appliqués A–G, refer to *Preparing Appliqués* below before cutting.

From cream print, cut:

4—10 $\frac{1}{2}$ " squares for appliqué foundations

From sage green print, cut:

4 of Pattern A
8 of Pattern G

From light green print, cut:

4 of Pattern B

From cream-and-blue dot, cut:

4 of Pattern C

From each of the 4 peach and coral prints, cut:

4 of Pattern D
1 of Pattern E
12 of Pattern F

From blue-green print, cut:

2—2 $\frac{3}{4}$ x 25" inner border strips
2—2 $\frac{3}{4}$ x 20 $\frac{1}{2}$ " inner border strips
4—2 $\frac{1}{2}$ x 42" binding strips

From blue floral, cut:

2—5 $\frac{1}{2}$ x 35" outer border strips
2—5 $\frac{1}{2}$ x 25" outer border strips

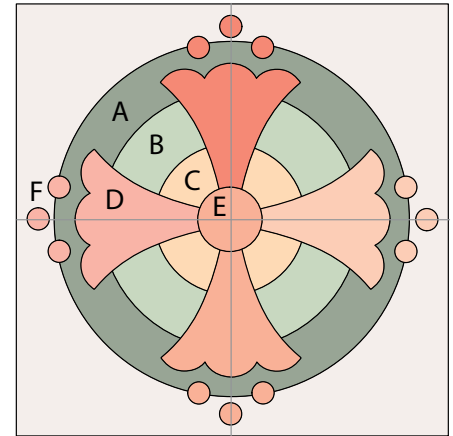
Preparing Appliqués

1. Using the patterns on pages 5 and 6, trace the patterns onto the paper side of fusible web the number of times listed in the cutting instructions above, leaving about $\frac{1}{2}$ " between tracings.

2. Cut out each fusible-web shape roughly $\frac{1}{4}$ " beyond the traced lines. Iron the fusible-web shapes to the wrong side of the specified fabrics following the manufacturer's instructions. Let cool, then peel off the paper backing.

Appliqué Blocks

1. Fold each cream print $10\frac{1}{2}$ " square in half twice and press lightly to create placement lines. Referring to the Appliqué Placement Diagram, position the appliqués in place on each prepared cream print square. Fuse in place following manufacturer's instructions.
2. Using matching thread and a narrow zigzag or blanket stitch, machine-stitch around each appliqué to complete a block.
3. Repeat steps 1 and 2 to make four blocks total.

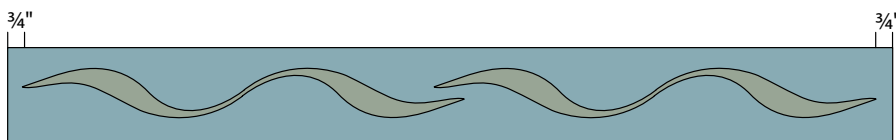


Appliqué Placement Diagram

Assemble Quilt Top

Use a $\frac{1}{4}$ " seam allowance throughout.

1. Sew together blocks in two pairs (refer to the Quilt Assembly Diagram on page 4). Press seams in opposite directions. Join pairs to make the quilt center. Press seams in one direction. The quilt center should be $20\frac{1}{2}$ " square including seam allowances.
2. Referring to Border Appliqué Placement Diagram, arrange two G leaf appliqués on a blue-green print $2\frac{3}{4}$ x $20\frac{1}{2}$ " inner border strip. Fuse in place following manufacturer's instructions. Using matching thread and a narrow zigzag or blanket stitch, machine-stitch around each appliqué to complete the border strip. Repeat to make a second short border strip. Matching the placement of the appliqués, repeat using the blue-green print $2\frac{3}{4}$ x 25" inner border strips to make two long border strips.
3. Sew short appliquéd inner border strips to top and bottom edges of quilt center. Then join long appliquéd inner border strips to side edges of quilt center. Press seams toward inner border. In same manner add outer borders to complete quilt top.

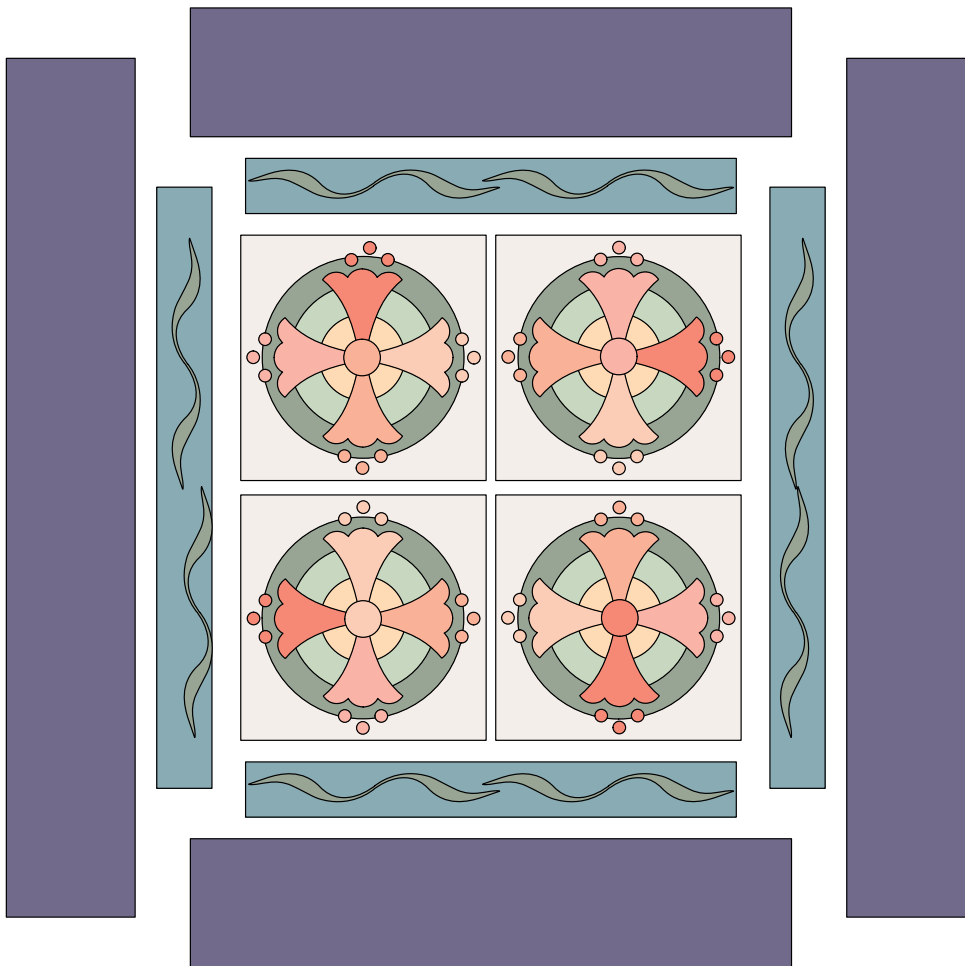


Border Appliqué Placement Diagram

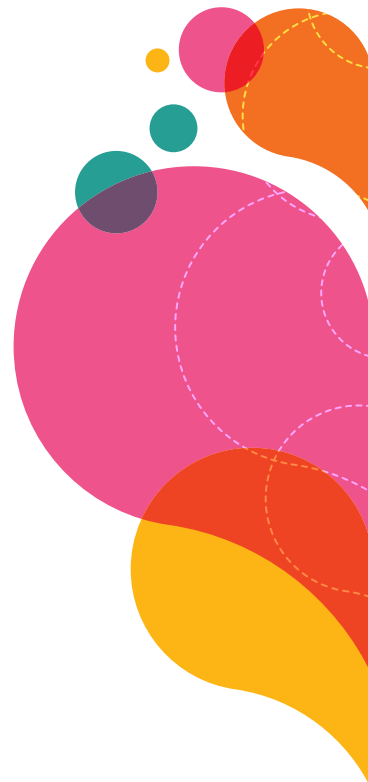
Finishing

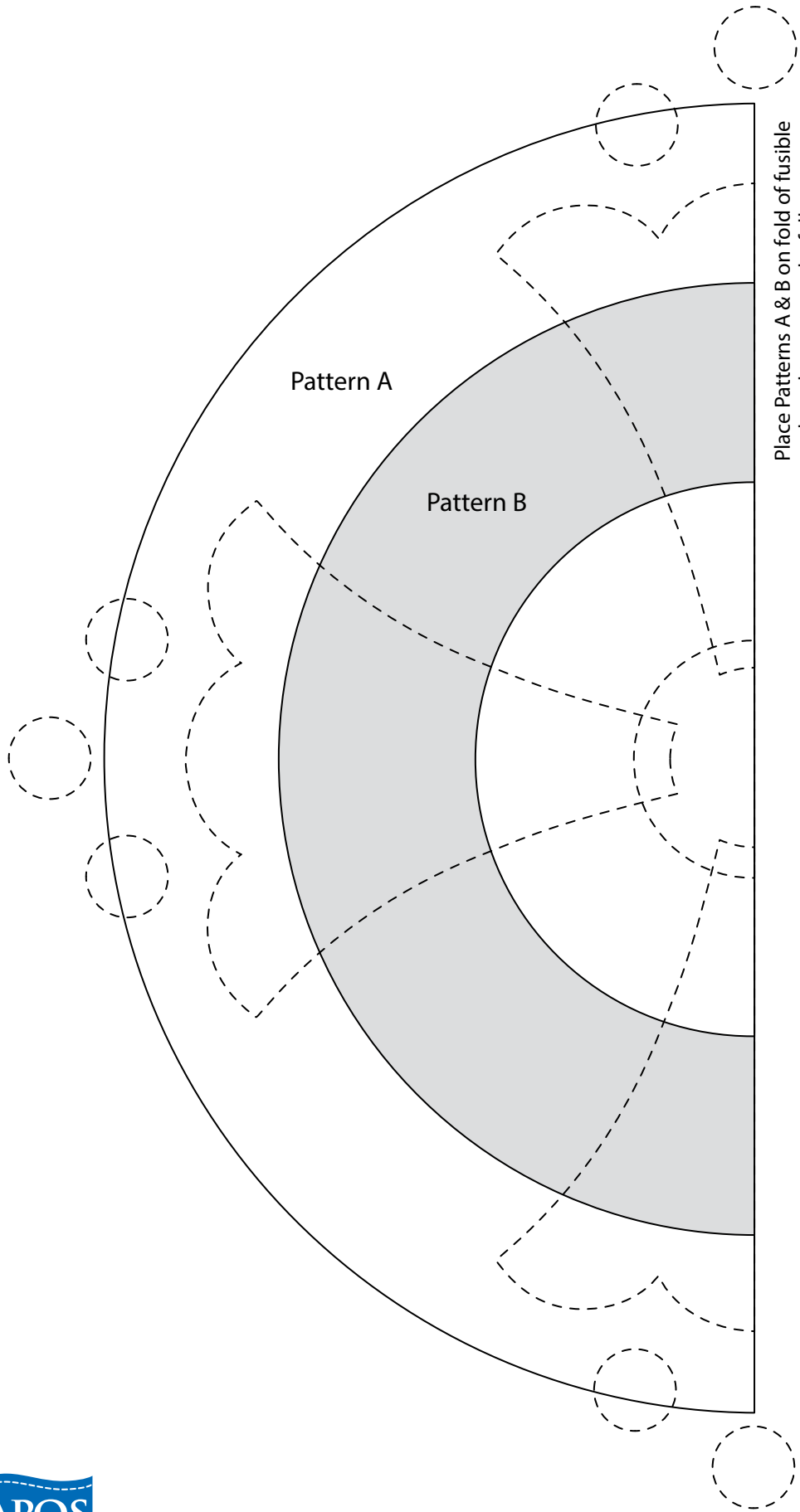
Quilt as desired and bind.

Pattern quilted with "Circleville" digital from Anne Bright Designs (anniebrightdesigns.com).



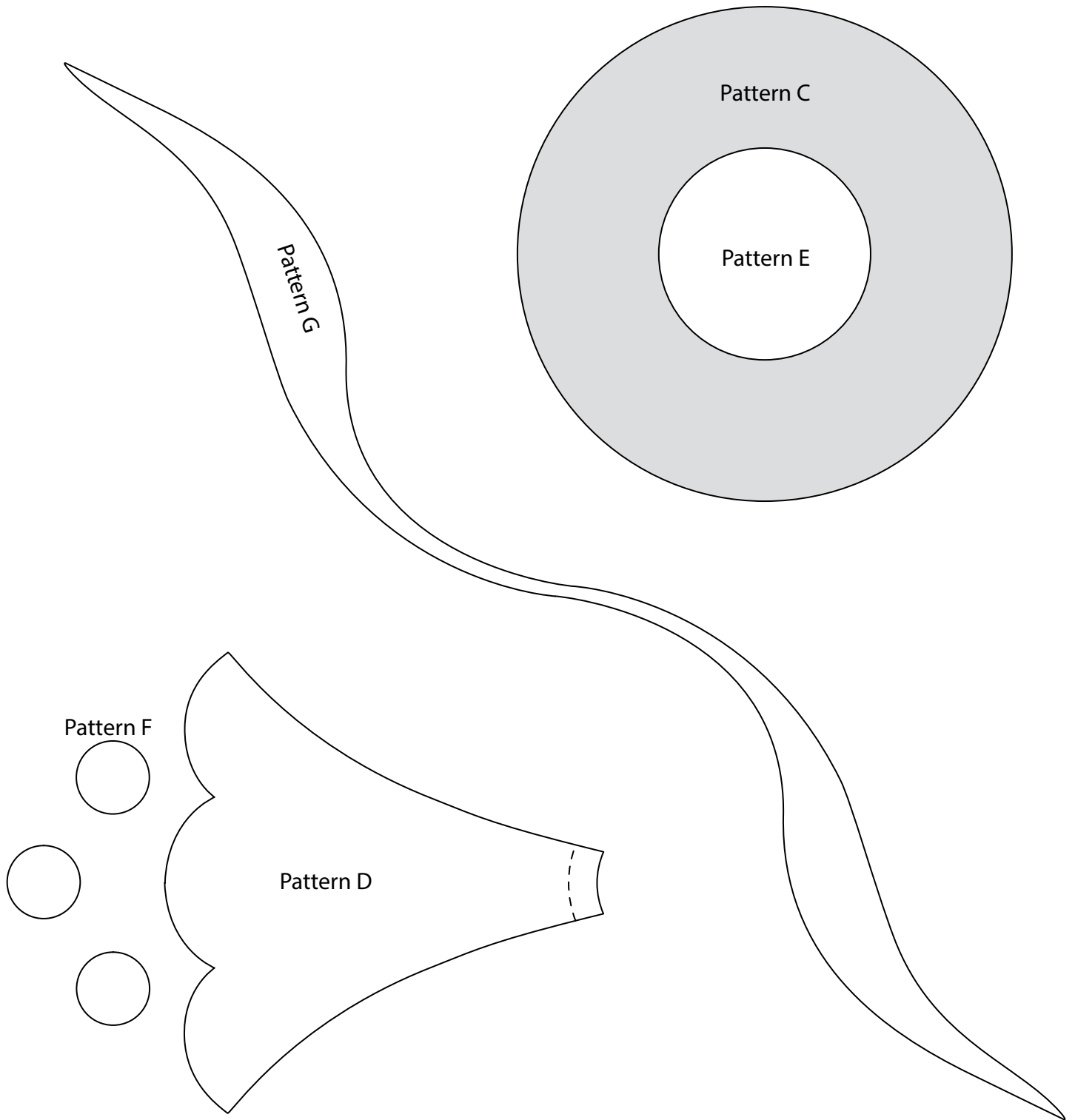
Appliqué Placement Diagram





Place Patterns A & B on fold of fusible web and trace to make full patterns.





Pattern designed by Heidi Kaisand, owner of Hen & Chicks Studio. Visit Heidi's website at henandchicksstudio.com.