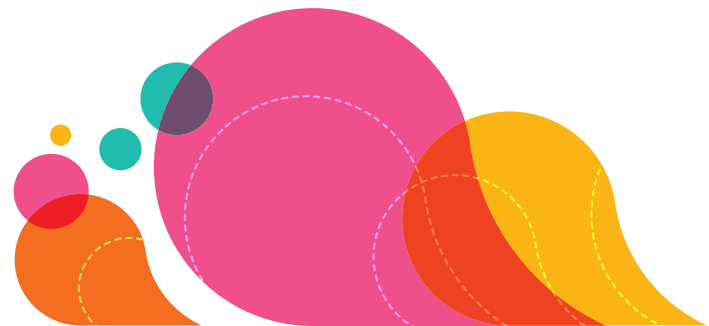




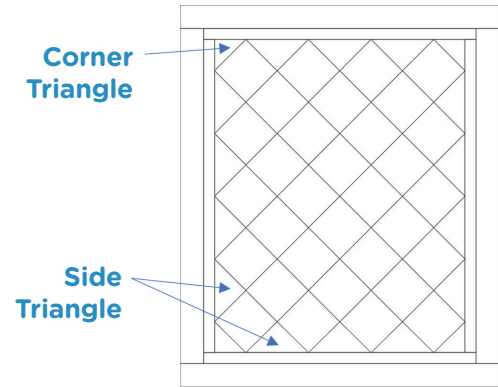
Reference charts for squares on point



Diagonal Measurement of a Square (in inches)		
Square Size	Expressed as a Decimal	Expressed as a Fraction*
3	4.24	4-1/4
3-1/2	4.95	5
4	5.66	5-3/4
4-1/2	6.36	6-3/8
5	7.07	7-1/8
5-1/2	7.78	7-3/4
6	8.49	8-1/2
6-1/2	9.19	9-1/4
7	9.90	9-7/8
7-1/2	10.61	10-5/8
8	11.31	11-3/8
8-1/2	12.00	12
9	12.73	12-3/4
9-1/2	13.43	13-1/2
10	14.14	14-1/8
10-1/2	14.85	14-7/8
11	15.56	15-5/8
11-1/2	16.26	16-1/4
12	16.97	17
12-1/2	17.68	17-3/4
13	18.38	18-3/8
13-1/2	19.09	19-1/8
14	19.80	19-7/8
14-1/2	20.51	20-1/2
15	21.21	21-1/4

*Fractions have been rounded UP to nearest 1/8 inch



How to Cut Corner and Side Triangles for Diagonally Set Quilts



Finished Block Size (in Inches)	Square Size Needed for CORNER Triangles (cut one diagonal) Yield: 2 triangles per square 	Square Needed for SIDE Triangles (cut both diagonals) Yield: 4 triangles per square 
3	3	5-1/2
3-1/2	3-3/8	6-1/4
4	3-3/4	7
4-1/2	4-1/8	7-5/8
5	4-1/2	8-3/8
5-1/2	4-7/8	9-1/8
6	5-1/8	9-3/4
6-1/2	5-1/2	10-1/2
7	5-7/8	11-1/4
7-1/2	6-1/4	11-7/8
8	6-5/8	12-5/8
8-1/2	7	13-3/8
9	7-1/4	14
9-1/2	7-5/8	14-3/4
10	8	15-1/2
10-1/2	8-3/8	16-1/8
11	8-3/4	16-7/8
11-1/2	9	17-5/8
12	9-3/8	18-1/4
12-1/2	9-3/4	19
13	10-1/8	19-3/4
13-1/2	10-1/2	20-3/8
14	10-7/8	21-1/8
14-1/2	11-1/8	21-3/4
15	11-1/2	22-1/2