

MODERN SQUARES

Designed by
Over The Top Quilting Studio, APQS Austin TX
200 Buttercup Creek Blvd Ste. 111
Cedar Park TX 78613
512-358-4605
www.overthetopquilting.com



Finished Size: 31.5" x 31.5"

Fabric Needed:

Background: 1 yard

Prominent Square: 1 strip of 2.5" x 42"

Receding Square: 1 strip of 2.5" x 42"

Cut: All measurements are written as W x L
From Prominent Square fabric (PS:)

Name	How many?	Size (W x L)
Piece 5, 6	2	8.5" x 2.5"
Piece 7, 8	2	2.5" x 12.5"

From Receding Square fabric (RS):

Name	How many?	Size (W x L)
Piece 1	1	1.5" x 2.5"
Piece 2	1	2.5" x 3.5"
Piece 10	1	5.5" x 2.5"
Piece 14	1	8.5" x 2.5"
Piece 15	1	2.5" x 7.5"
Piece 18	1	2.5" x 12.5"

From Background fabric (BG):

Name of unit	How many?	Size (W x L)
Center (CTR)	1	1.5" x 1.5"
Piece 3	1	5.5" x 3.5"
Piece 4	1	8.5" x 5.5"
Piece 9	1	6.5" x 12.5"
Piece 11	1	5.5" x 3.5"
Piece 12	1	5.5" x 7.5"
Piece 13	1	8.5" x 5.5"
Piece 16	1	13.5" x 7.5"
Piece 17	1	2.5" x 7.5"
Piece 19	1	6.5" x 19.5"
Piece 20, 21	2	31.5" x 6.5"

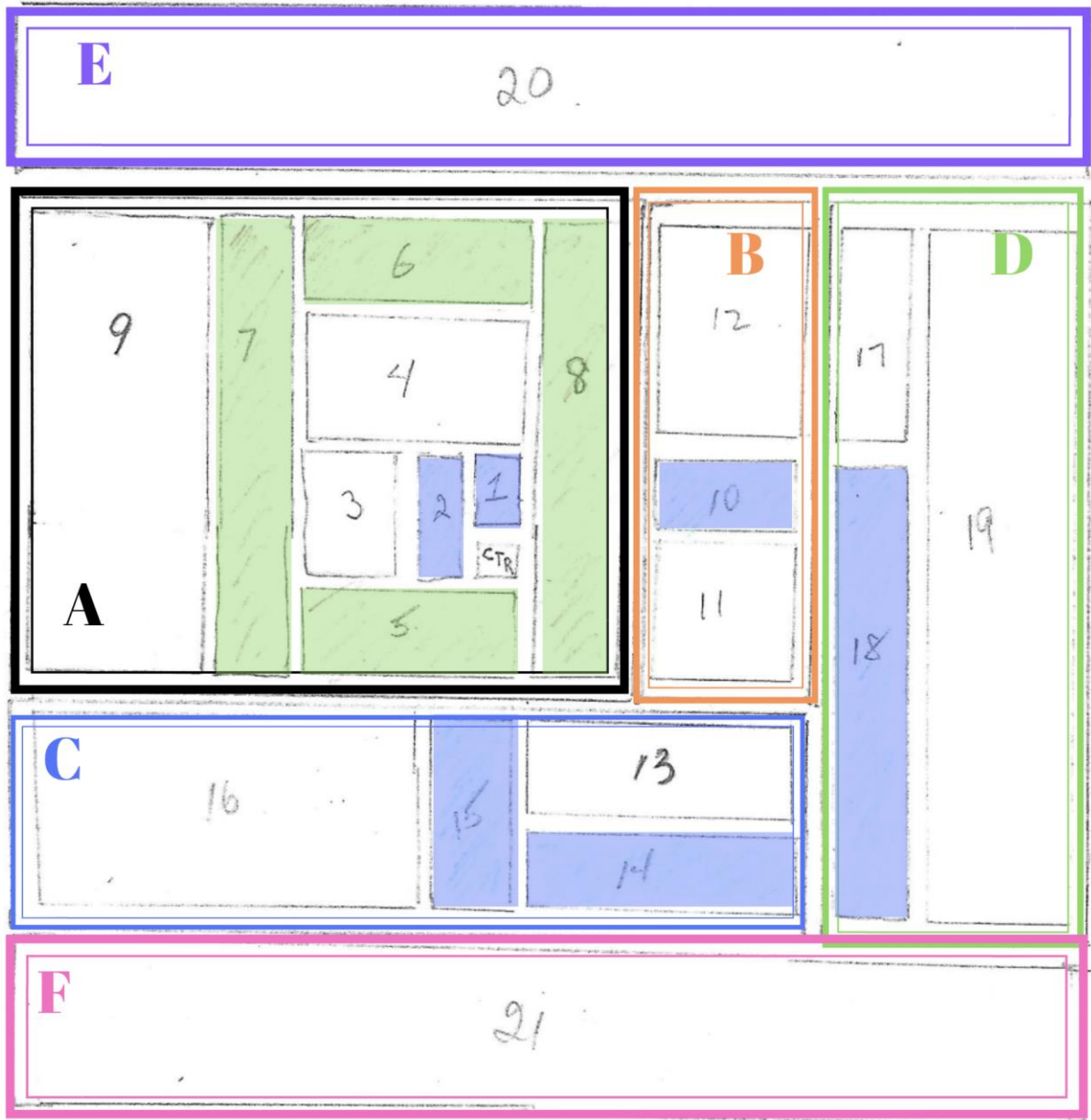
Sewing Sequence: Follow the numbers on diagram 1 and sew in numerical order for each section, starting the CTR. After each section is completed, sew in alphabetical order as indicated in diagram 2.

NOTE: The proportions in the following diagrams are approximate. Use the cutting measurements charts for accuracy.

Diagram 1



Diagram 2



Fabric Used: Paintbrush Studio

Painter's Palette Shell Pink

Painter's Palette Wasabi

Painter's Palette Midnight

Thread: Hab and Dash 40 wt. Peach

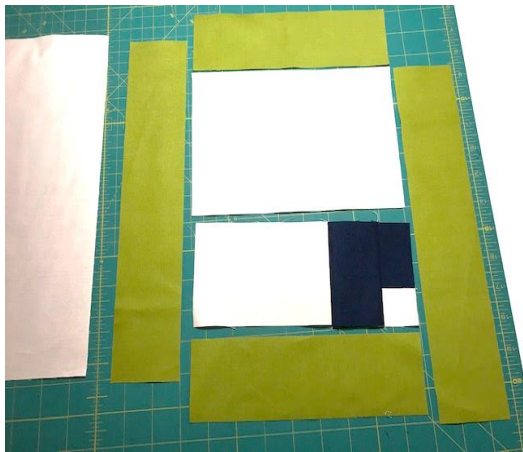
Quilt Path Quilting Pattern - Hickory Dickory by Anne Bright Patterns



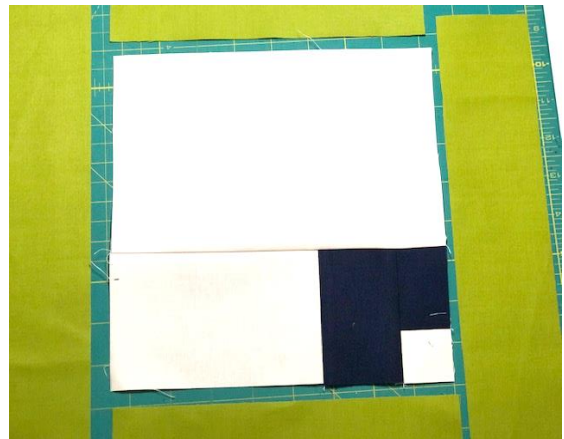
1



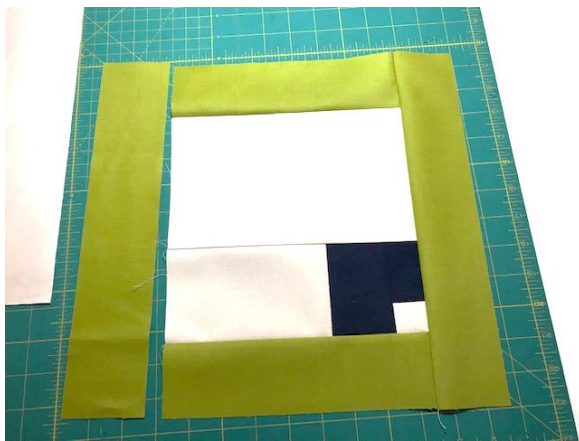
2



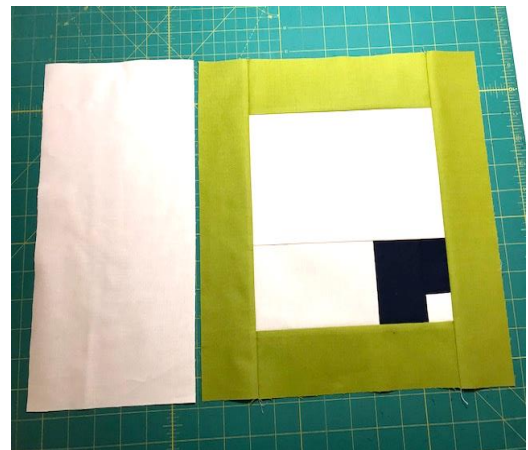
3



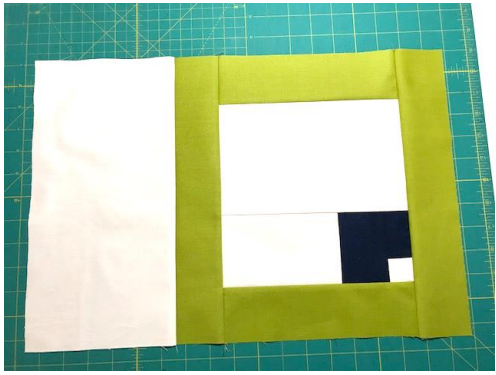
4



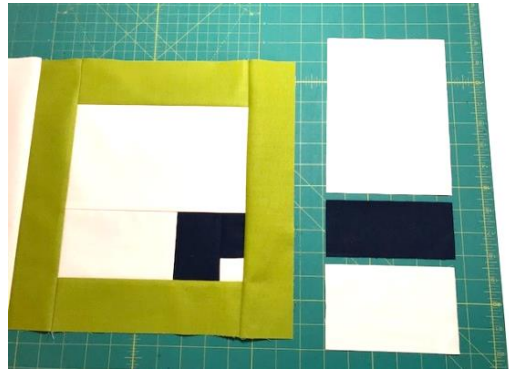
5



6



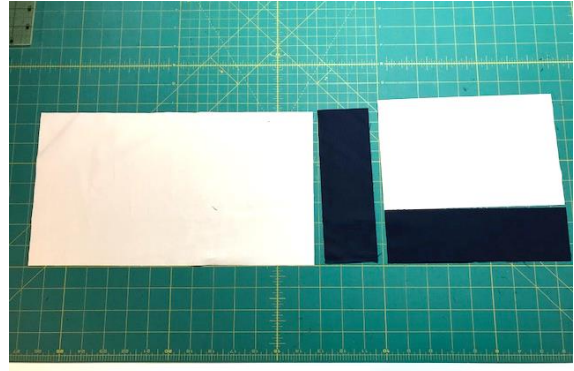
7



8



9



10



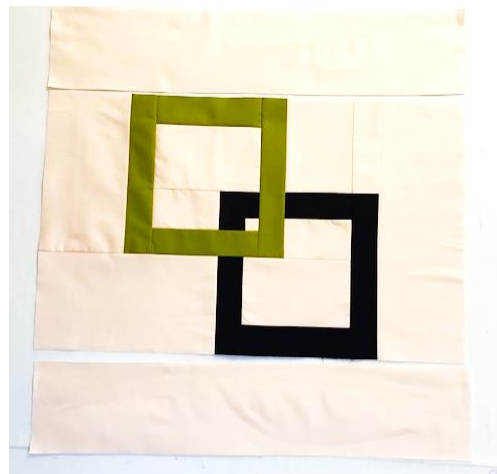
11



12



13



14