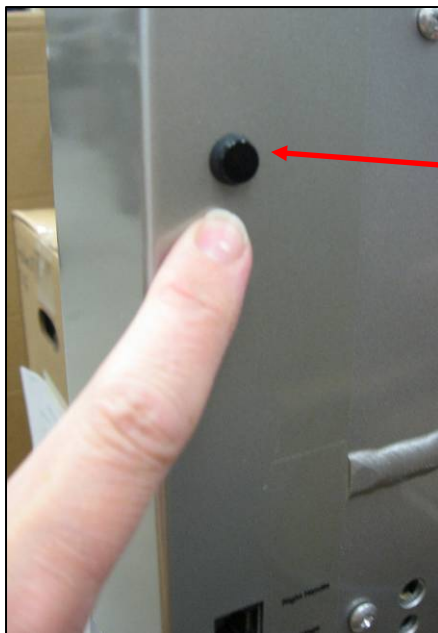


2008 and Newer Machines

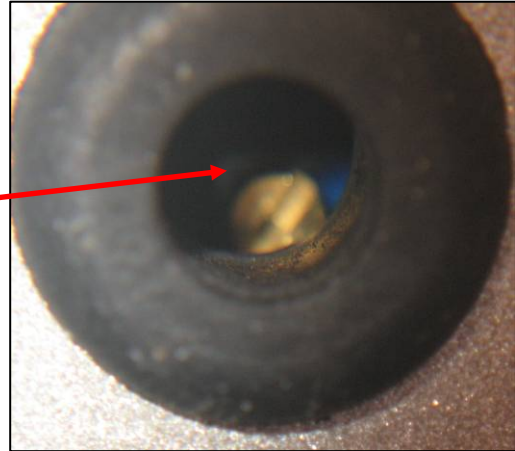
Adjusting the Needle Positioner

- Remove the bobbin case and bobbin, and unthread the machine beyond the “take-up lever” on the side so that no thread can get tangled in the hook during the next step.
- Set the motor speed to a medium speed, about half way between the Turtle and Rabbit reference icons. Set the machine to manual mode (Manual/S.R. toggle switch is set to “Manual”) and tap the **green** button on the RIGHT handle to start the motor. Let the sewing head warm up for 3-4 minutes before proceeding.
- **Turn off the main power switch on the side of the machine.**
- The access hole for adjusting the needle positioner is located on the right rear side of the sewing head (when viewed from the pantograph side). Use a small flat blade screwdriver or your fingernail to gently pry out the access hole’s protective plug.



Access Hole for Needle
Positioner Adjustment Screw

The “Adjustment Screw” is located inside the access hole on the right rear of the sewing head (when viewed from the pantograph side)



- If the machine is taking more than one single stitch at a time, then gently turn the screw on clockwise (right) to slow down the positioning speed. Turning the screw counterclockwise (left) will increase the positioning speed. Note: If the speed is set too slow, the needle will not position correctly or may not move at all. **If the speed is set too fast, the needle may continue to move up and down and not stop at all.** You may need to rotate the adjusting screw 1 – 2 revolutions as needed.
- After making an adjustment, turn on the main power to the machine and operate the needle up/down function several times (“white” button on the LEFT handle) and confirm that the needle is stopping correctly. If additional adjustments are needed, then turn off the main power again before turning the adjusting screw.
- When you are satisfied that the needle positioner is functioning correctly, then re-install the plug for the access hole.