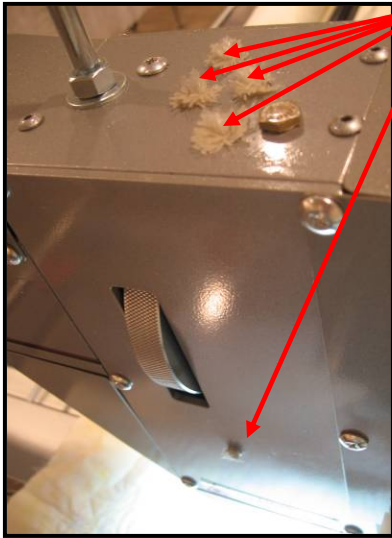


# Appendix A

## Procedure for Cleaning and Oiling Machine



Rub your finger across each of the 5 oiling wicks; it should be wet with oil. If any wick is dry, add two drops of oil to that wick.



### Oiling the Five Wicks

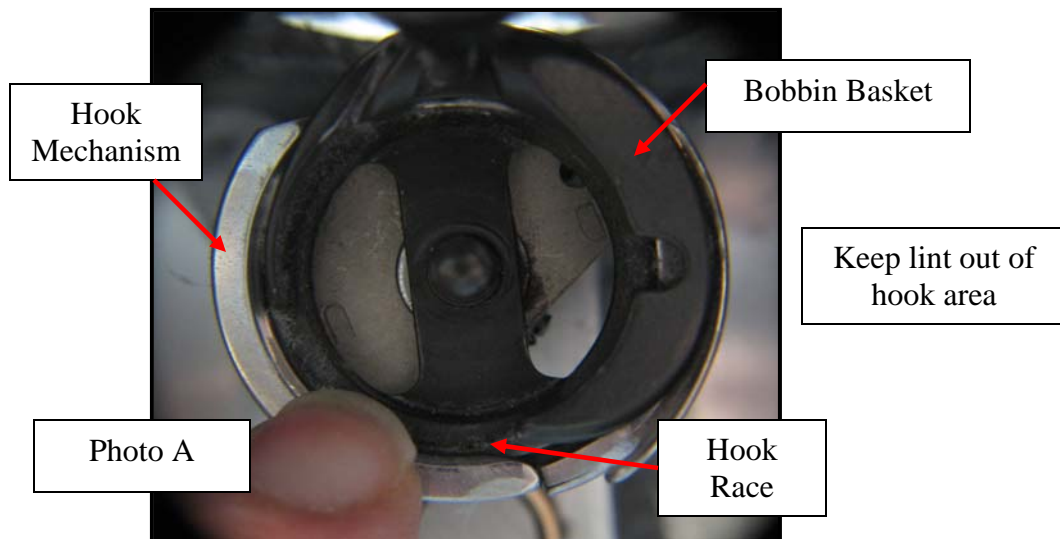
- Your APQS machine does not require excessive oiling. To avoid getting oil on a quilt, you may wish to check the oiling wicks before you load a new quilt on the machine, and any time the machine has been setting idle for a long period of time.
- Use your finger and rub it across one of the oiling wicks. It should be wet with oil. If it is not, simply put two drops of oil on that particular wick. Check each of the five wicks separately. Each wick will absorb oil differently; you won't need to oil each one every time.
- In fact, avoid over-oiling your quilting machine. Some signs of over-oiling include excess oil accumulating on the needle bar or hopping foot, oil dripping from the light bar or out the side of the machine, or oil spots on the quilt. Take time to wipe the needle bar and hopping foot, and do not leave the machine parked on top of a quilt overnight or for an extended period.

## Cleaning and Oiling the Hook

**Important:** The hook area must be cleaned and oiled regularly. Every time you change a bobbin, remove lint from the bobbin case and hook area (see complete instructions below.) Between each quilt project, thoroughly clean the hook area with the procedure outlined below so that you can have trouble-free quilting.

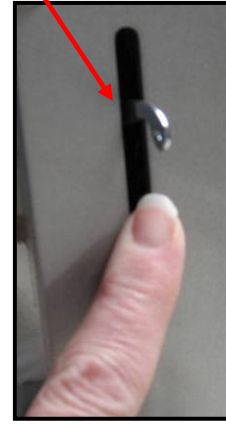
### ***With every bobbin change:***

- Some types of threads, particularly cotton, produce a lot of lint. Lint build-up in the bobbin case or hook area can cause tension changes and poor stitch quality. Excess lint can also become dirty and could even be quilted into the quilt. To prevent lint buildup, remove lint from the bobbin case and hook area with a small brush or compressed air. Check for excess lint in the bobbin case/hook assembly area whenever a bobbin is changed.



***Between each quilting project (or sooner if necessary):***

- Place a small rag on the carriage under the hook area to catch excess oil and lint. Remove the bobbin case and unthread the machine from the front, past the take-up lever.



- Working from the front side of the machine, brush lint from the hook and hook area (or use compressed air).
- Check to make sure that the rag is out of the way of the hook assembly. Use the “command-**red** or command-**green**” button sequence on the RIGHT handle to set the motor speed at about 11—a medium sewing motor speed (you’ll use the manual mode during cleaning). Now start the machine in manual mode using the RIGHT handle’s “command-**blue**” button sequence.
- With the machine running, spray the hook area generously with WD 40 to flush out lint particles that may be inside the hook race. The “race” is the area between the bobbin basket (the dark part of the hook assembly where the bobbin case nestles in) and the hook (the silver part that moves around the bobbin basket in a counter-clockwise motion)—see Photo A on previous page. Allow the machine to run 10-15 seconds to throw off the excess WD 40.

**SAFETY NOTE: Do not use a rag to remove lint from the area while the machine is running!**

**Keep your hands away from the rotating hook assembly while the machine is running!**

- Stop the machine by touching any colored button on either handle. Use compressed air to blow out any excess WD 40, and carefully wipe out any additional excess using a separate rag. Be sure to keep your hands away from the handles to prevent accidentally starting the motor, or use the master switch on the machine to turn off power when working in the hook area. *Note: WD 40 is not a lubricating agent. Oil must be applied to the hook after cleaning with WD 40.*

- Check to see that the rag is still in place under the hook area and is out of the way of any moving parts. Now apply one to two drops of oil to the hook assembly as shown at right, between the dark-colored bobbin basket and the silver hook mechanism.



- Keep the rag out of the way of moving parts and start the machine again using the “command-**blue**” button sequence on the RIGHT handle. Allow the machine to run for 10-15 seconds so that the oil can be distributed in the hook assembly.
- Turn off the machine by touching any colored button on any handle, and wipe off any excess oil in the area using a separate rag. Remove the rag from below the bobbin area. Re-thread the machine, insert a bobbin and bobbin case, and sew on a scrap piece of material to remove any excess oil and make any minor upper tension adjustments. This can even be done by putting both channel locks “on” and then guiding a piece of pre-layered fabric, batting and backing under the needle, much like domestic machine quilting.
- If you notice the machine getting noisy during normal operation, the hook assembly may be dry and needs to be oiled.